

PUMPKIN CARVING TEMPLATES

Choose from six unique bowling
themed pumpkin carving templates!

WHAT'S INSIDE



INSTRUCTIONS:

1. Cut the crown of the pumpkin and remove the inside seeds and fibers.
2. Print out this page at 100% scale, or larger if you have a large pumpkin.
3. Cut out the dark shapes on this page.
4. Tape the dark shapes onto your pumpkin, and outline them with a dark marker.
5. Cut your pumpkin along the outlines you just made with your dark marker.
6. Discard the shapes you just cut out.
7. Place a candle or tea light inside the pumpkin, light and enjoy!



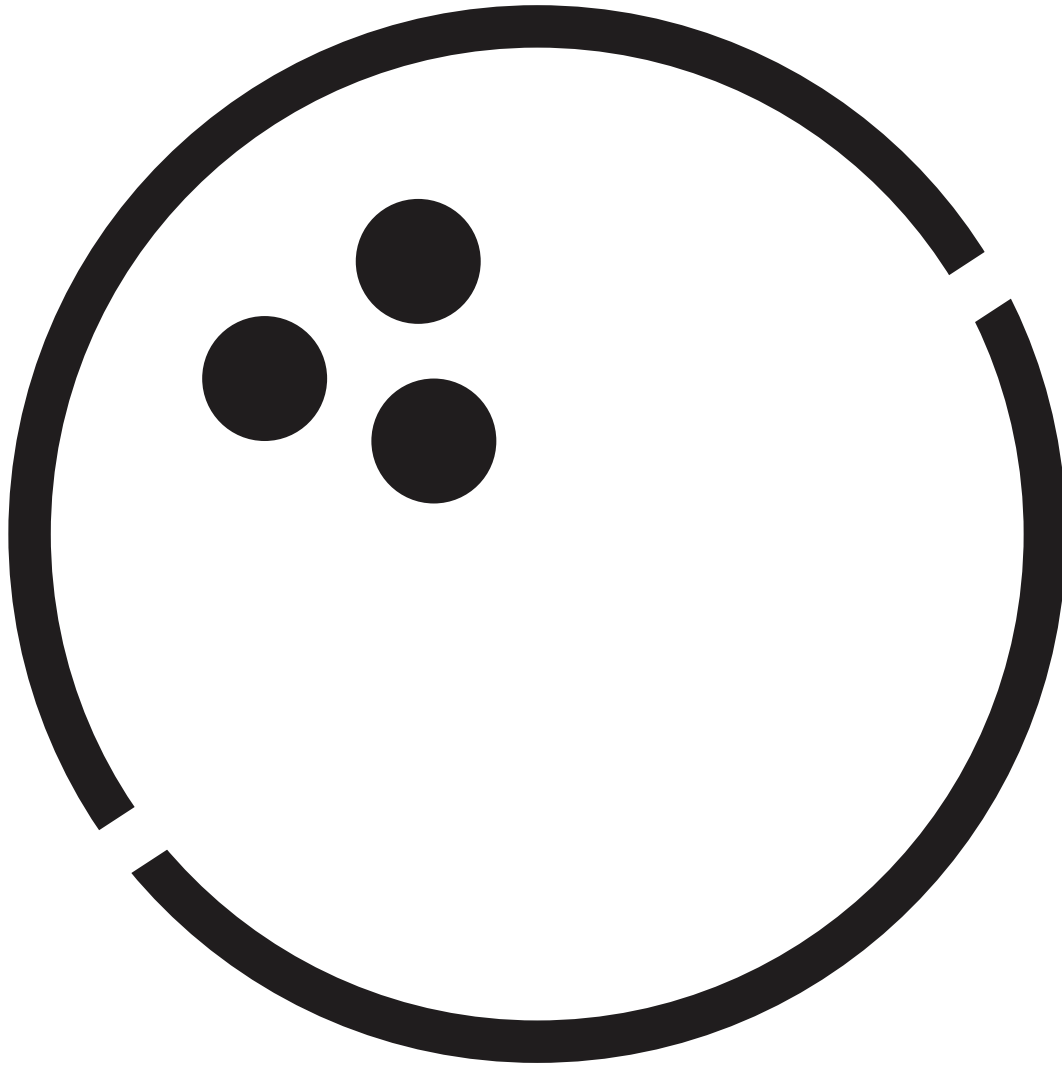
INSTRUCTIONS:

1. Cut the crown of the pumpkin and remove the inside seeds and fibers.
2. Print out this page at 100% scale, or larger if you have a large pumpkin.
3. Cut out the dark shapes on this page.
4. Tape the dark shapes onto your pumpkin, and outline them with a dark marker.
5. Cut your pumpkin along the outlines you just made with your dark marker.
6. Discard the shapes you just cut out.
7. Place a candle or tea light inside the pumpkin, light and enjoy!



INSTRUCTIONS:

1. Cut the crown of the pumpkin and remove the inside seeds and fibers.
2. Print out this page at 100% scale, or larger if you have a large pumpkin.
3. Cut out the dark shapes on this page.
4. Tape the dark shapes onto your pumpkin, and outline them with a dark marker.
5. Cut your pumpkin along the outlines you just made with your dark marker.
6. Discard the shapes you just cut out.
7. Place a candle or tea light inside the pumpkin, light and enjoy!



INSTRUCTIONS:

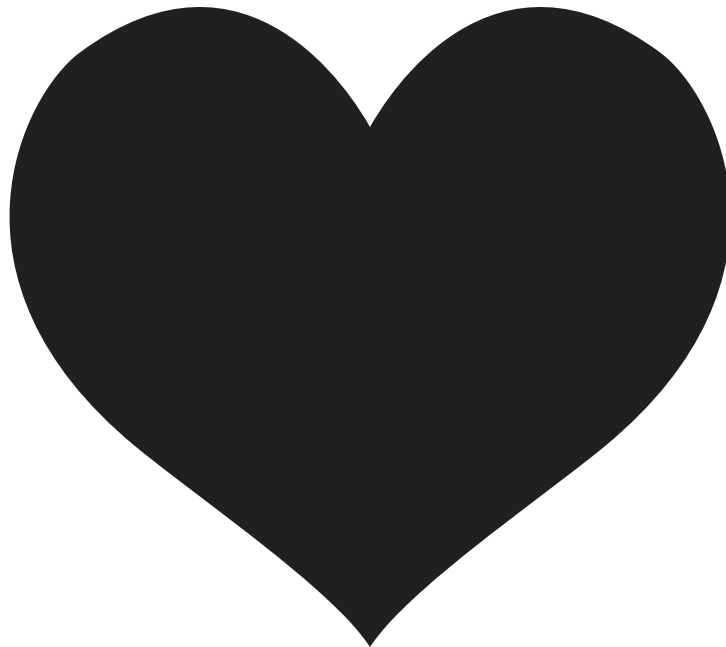
1. Cut the crown of the pumpkin and remove the inside seeds and fibers.
2. Print out this page at 100% scale, or larger if you have a large pumpkin.
3. Cut out the dark shapes on this page.
4. Tape the dark shapes onto your pumpkin, and outline them with a dark marker.
5. Cut your pumpkin along the outlines you just made with your dark marker.
6. Discard the shapes you just cut out.
7. Place a candle or tea light inside the pumpkin, light and enjoy!



INSTRUCTIONS:

1. Cut the crown of the pumpkin and remove the inside seeds and fibers.
2. Print out this page at 100% scale, or larger if you have a large pumpkin.
3. Cut out the dark shapes on this page.
4. Tape the dark shapes onto your pumpkin, and outline them with a dark marker.
5. Cut your pumpkin along the outlines you just made with your dark marker.
6. Discard the shapes you just cut out.
7. Place a candle or tea light inside the pumpkin, light and enjoy!

WE



BOWLING

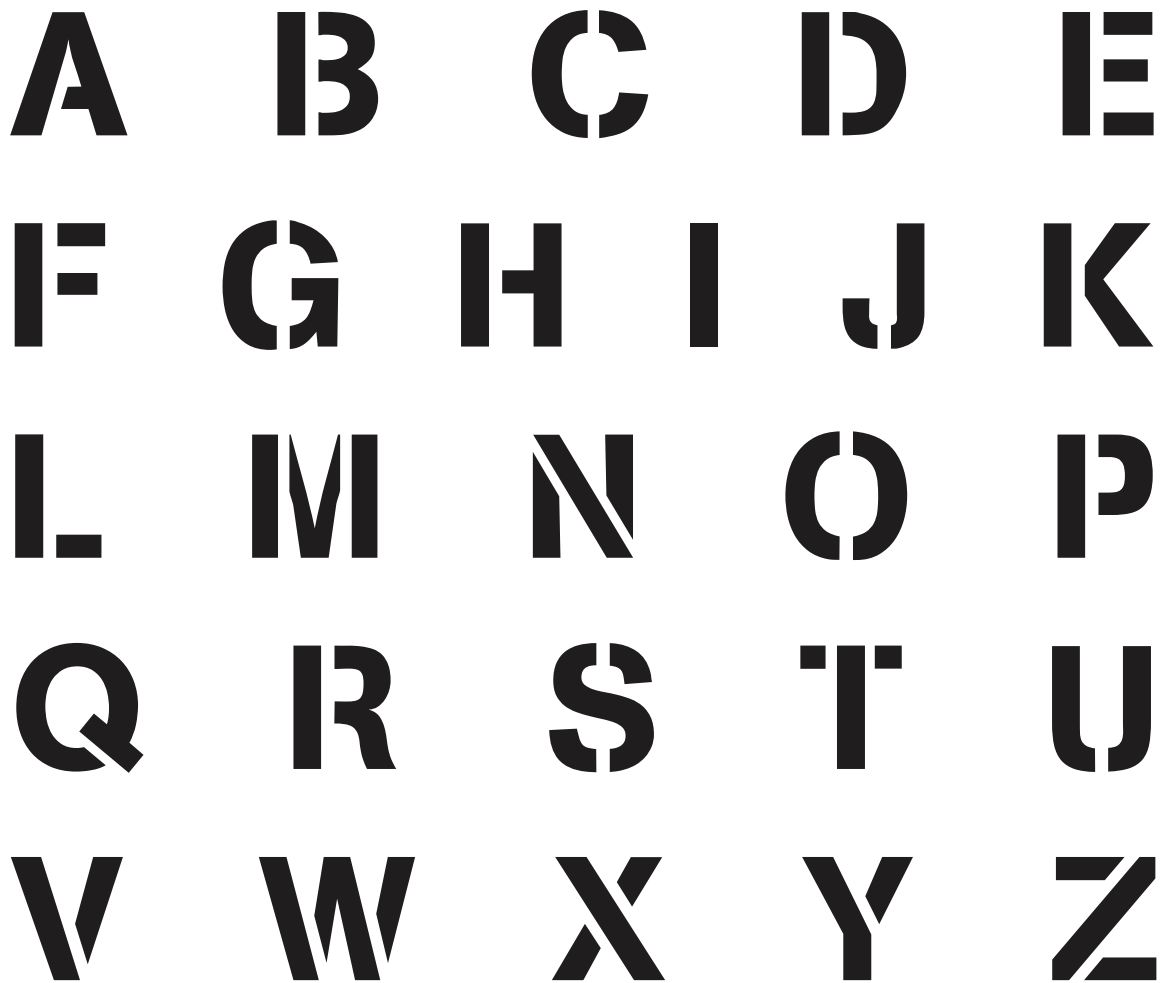
INSTRUCTIONS:

1. Cut the crown of the pumpkin and remove the inside seeds and fibers.
2. Print out this page at 100% scale, or larger if you have a large pumpkin.
3. Cut out the dark shapes on this page.
4. Tape the dark shapes onto your pumpkin, and outline them with a dark marker.
5. Cut your pumpkin along the outlines you just made with your dark marker.
6. Discard the shapes you just cut out.
7. Place a candle or tea light inside the pumpkin, light and enjoy!

NATIONAL BOWLING ACADEMY

INSTRUCTIONS:

1. Cut the crown of the pumpkin and remove the inside seeds and fibers.
2. Print out this page at 100% scale, or larger if you have a large pumpkin.
3. Cut out the dark shapes on this page.
4. Tape the dark shapes onto your pumpkin, and outline them with a dark marker.
5. Cut your pumpkin along the outlines you just made with your dark marker.
6. Discard the shapes you just cut out.
7. Place a candle or tea light inside the pumpkin, light and enjoy!



INSTRUCTIONS:

1. Cut the crown of the pumpkin and remove the inside seeds and fibers.
2. Print out this page at 100% scale, or larger if you have a large pumpkin.
3. Cut out the dark shapes on this page.
4. Tape the dark shapes onto your pumpkin, and outline them with a dark marker.
5. Cut your pumpkin along the outlines you just made with your dark marker.
6. Discard the shapes you just cut out.
7. Place a candle or tea light inside the pumpkin, light and enjoy!

